

ESWOOD

ES25

ES32

**Installation and
Operation Manual**

MODEL: ES25 & ES32

PASS-THROUGH DISHWASHER



www.middleby.com.au

 **MIDDLEBY AUSTRALIA**

MANUFACTURER

Goldstein Eswood Commercial Cooking PTY LTD

For inquiries please call your nearest state branch or visit our website

NSW

211-217 Woodpark Road
Smithfield NSW 2164

VIC – TAS

47 Stubbs Street
Kensington VIC 3031

QLD

U12, 210 Queensport Rd Nth
Murarrie QLD 4172

WA

U2, 9 Meares Way
Canning Vale WA 6155
08 9456 0559

1800 013 123 | +61 2 9604 7333

SALES & ENQUIRIES

Sales: sales@middleby.com.au

Parts Enquiries: spares@middleby.com.au

Technical Enquiries: technical@middleby.com.au

www.middleby.com.au



1. Contents

1. CONTENTS..... 3

2. INTRODUCTION 4

3. SPECIFICATIONS..... 4

4. DIMENSIONS..... 5

5. INSTALLATION 7

6. OPERATION 9

7. CLEANING AND MAINTENANCE 10

8. TROUBLE-SHOOTING..... 11

9. WIRING DIAGRAMS 12

10. SPARE PARTS 14

11. WARRANTY 27

1.1 Safety Notice

The below symbols may be used in isolation or combination throughout this manual. Where used, these symbols are intended to alert personnel of potential risk, either to themselves or to the equipment and/ or convey important messages regarding the safe operation and maintenance of the appliance.

 **CAUTION**

This appliance is intended for professional use and is only to be used by trained, qualified personnel. Installation, maintenance and repairs should be performed by an authorized Goldstein Eswood service agent or qualified personnel. Installation, maintenance or repairs by an unauthorized and unqualified personnel will void the warranty.

 **WARNING**

This appliance contains dangerous voltages and can be hazardous. Improper installation, adjustment, alteration, service or maintenance can cause property damage, injury or death. Please read the installation, operating and maintenance instructions thoroughly before installing or servicing this appliance.

 **ATTENTION**

All plumbing and electrical work must be installed as per manufacturer’s instructions, the Plumbing Code of Australia, AS/NZS 3000 – Electrical Installations, AS 1668.2 – Mechanical ventilation in buildings and any other local regulations.

Specifications

2. Introduction

Congratulations on purchasing your Eswood commercial dishwasher. Goldstein Eswood Commercial Cooking is an Australian company and has been operating since 1911, building high quality products.

The information contained in this manual will assist your installer and ensure correct location and connection. Thoroughly read the operation instructions and the maintenance sections, as understanding your products, its operation, and its cleaning and service requirements will provide you with long and satisfactory service. Neglecting regular cleaning and maintenance could shorten the life of the product and decrease its efficiency. Please ensure only authorised service technicians are called to any difficulties that may arise.

3. Specifications

3.1 General Machine Specifications

	ES-25	ES-32
Net Weight	103kg	106kg
Hourly Capacity	400 pieces	700 pieces
Wash Cycle Times	70 secs / 100 secs	
Dwell / Rinse Cycles	5secs / 14secs	
Cup Rack 500 x 500	1 rack	1 rack
Plate Rack 500 x 500	1 rack	2 racks
Cutlery Container	1 container	2 containers
Detergent Injector	0 – 8.5mL (adjustable)	
Rinse Aid Injector	0 – 8.5mL (adjustable)	

3.2 Wash Power Specifications

	ES-25 / ES-32
Wash Pump Power	550W (50Hz)
Wash Tank Heater	2.4kW
Wash Pump Capacity	400L/min
Wash Tank Capacity	30L
Wash Temperature	60°C – 65°C

3.3 Rinse Power Specifications

	ES-25	ES-32
Rinse Tank Heater	2.9kW	6.0kW
Rinse Tank Capacity	12L	
Rinse Pump Power	250W (50Hz)	
Rinse Temperature	85°C (78°C minimum)	
Water Consumption	3.5L per cycle	

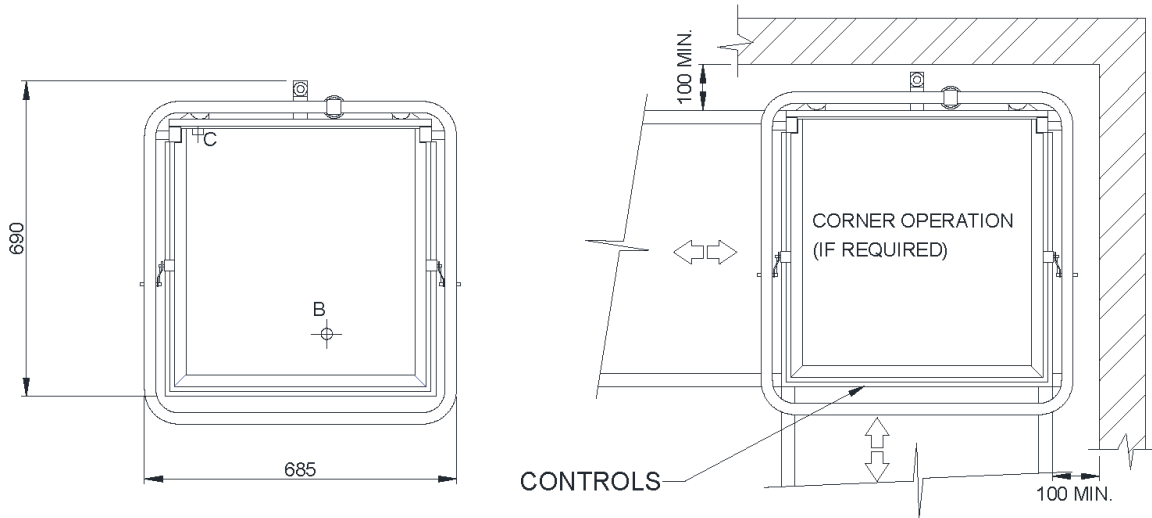
3.4 Electrical and Water Specifications

	ES-25	ES-32
Electrical Input	240V 15A 50Hz	415V 50Hz 3Ph + N
Electrical Load	3.5kW	9.0kW
Hot Water Inlet Temp	65°C minimum	
Inlet Pressure	100 – 400 kPa	
Hot Water Connection	½" BSPF	
Water Hardness	<100 ppm	
Drain Outlet	Ø22mm x 1.8m hose	

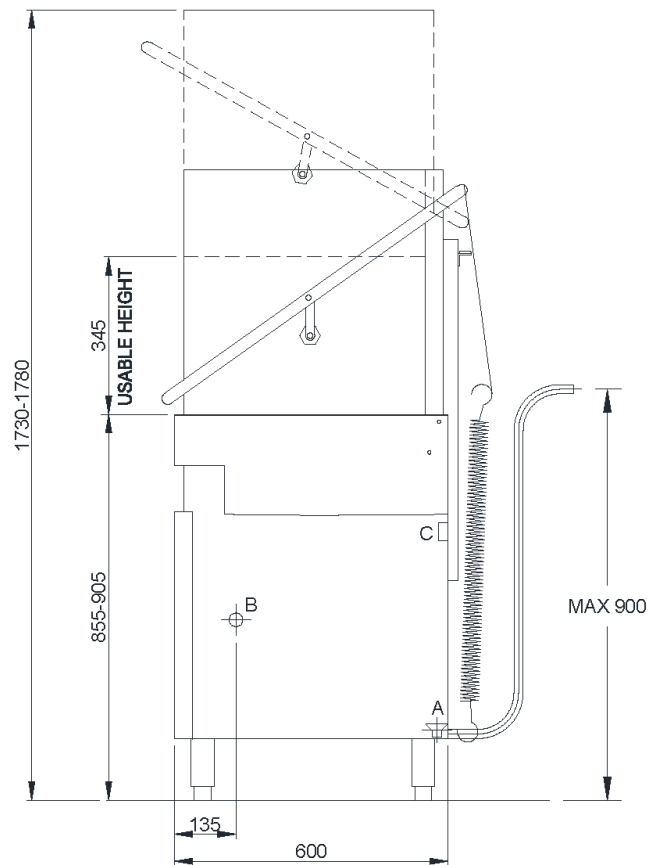
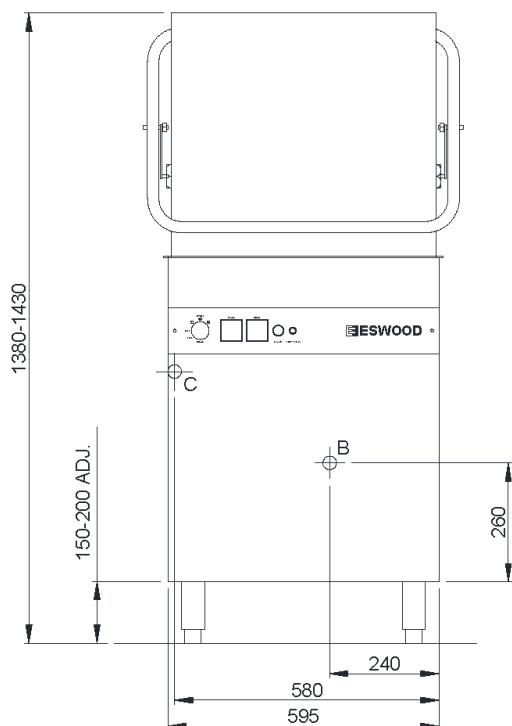
Note: Inlet water quality must be potable. Do not use bore water without suitable filtration systems. Soften or filtrate inlet water in excess of 100 ppm and descale as necessary. Fit a pressure reducing device for pressure over 400 kPa.

4. Dimensions

4.1 ES25



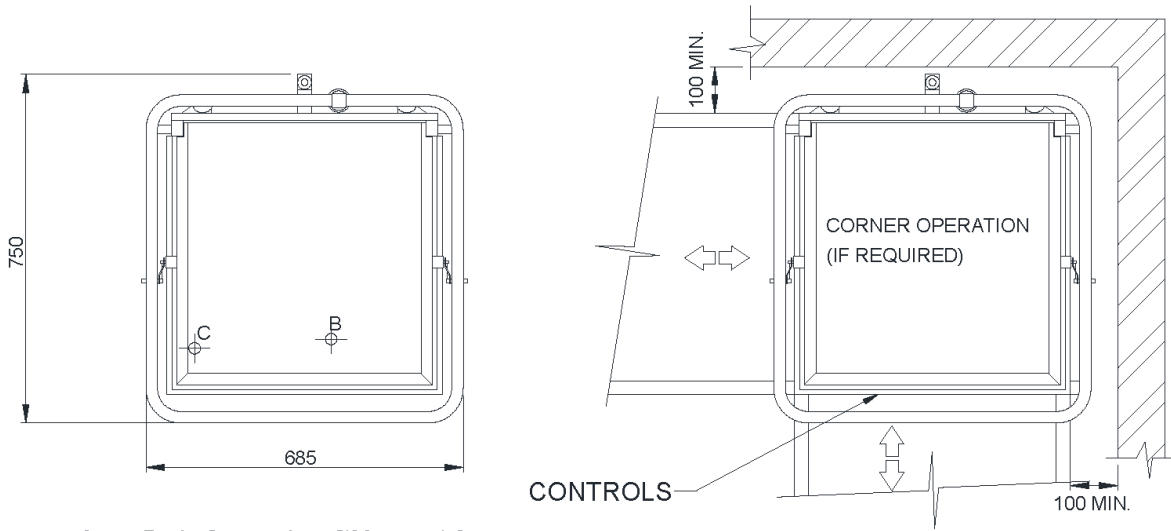
- A. Drain Connection: Ø22mm x 1.8m drain hose
- B. Hot water supply inlet: 1/2" BSPF (15 to 58 psi-100 to 400 kPa)
- C. Electrical Connection: 240V/50Hz/15A Plug x 2m Lead



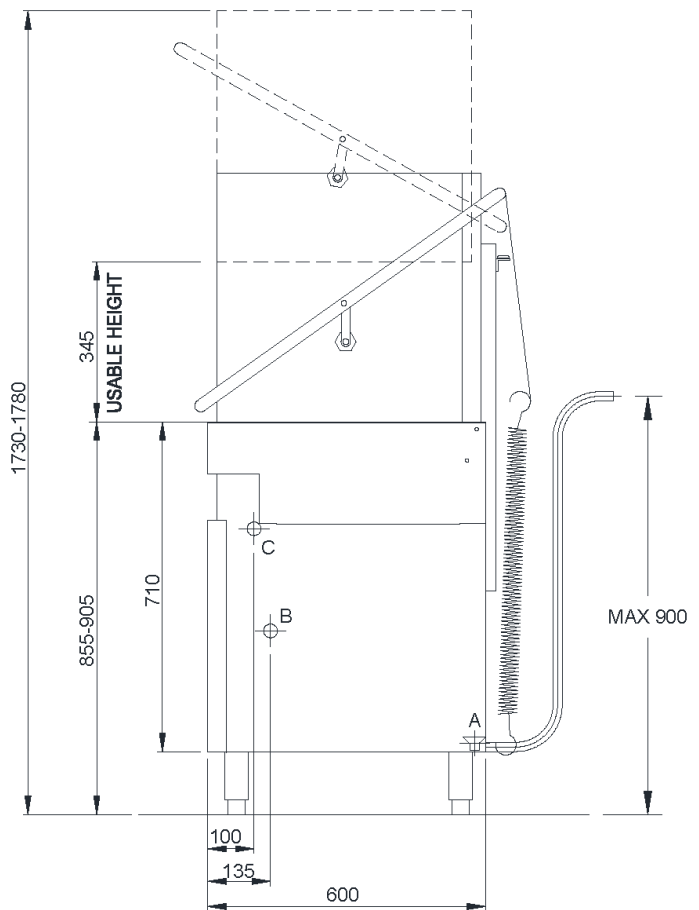
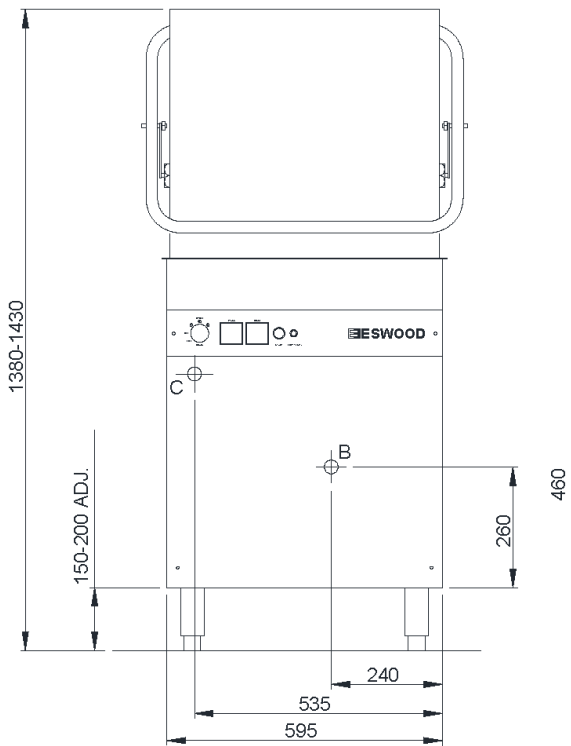
Note: Dimensions may change without notice in accordance with product design and development

Dimensions

4.2 ES32



- A. Drain Connection: Ø22mm x 1.8m drain hose
- B. Hot water supply inlet: 1/2" BSPF (15 to 58 psi-100 to 400 kPa)
- C. Electrical Connection: 415V/50Hz/3Ph+N+E



Note: Dimensions may change without notice in accordance with product design and development

5. Installation

Eswood dishwashers are designed to give long and satisfactory service and incorporate the best possible materials and workmanship. Proper installation and preventative maintenance are vital for optimum performance and efficiency.



ATTENTION

This appliance must be installed by qualified personnel and in accordance with manufacturer's instructions, the Plumbing Code of Australia, AS/NZS 3000–Wiring Rules, AS 1668.2–Mechanical ventilation in buildings and any other local regulations. Installation, maintenance or repairs by unauthorized and unqualified personnel will void warranty.

5.1 Receiving Inspection & Unpacking

- Remove carton, packaging and all plastic protective material from the appliance.
- Check for damages to the appliance and report any damage to the transport company and dealer.
- Ensure all loose packaged items i.e. baskets, manuals & warranty cards are provided with the unit and report any missing items.
- Check the rating plate corresponds with the available electrical supply.

5.2 Installing into Location, Water and Electrical Connections

- Install the appliance in its position and then level off by turning the adjustable feet. Remove the lower panel. **Note: It is recommended to leave 300mm clearance on the left side of the appliance to allow service access.**
- Connect the Ø22mm drain hose to a drain trap spigot or alternative drain discharge line.
- Connect the hot water inlet to a ½" BSP isolating valve adjacent to the machine. The hot water inlet supply should be at least 65°C and between 100 – 400kPa. A pressure reducing valve should be fitted for pressures above 400kPa.
- **For ES-32 models:** ensure that the rotary switch on the control panel is OFF, then remove the control panel and connect the 3-phase power to L1, L2 and L3. Connect the neutral to N on the terminal block and connect the earth to the earth terminal. An isolator switch is also required adjacent to the machine. When finished, ensure the direction of rotation of the rinse and wash motors correspond with the marked arrows on the motor housings.
- **For ES-25 models:** ensure that the rotary switch on the control panel is OFF, then connect the provided 240V, 15A plug into an appropriately sized socket and isolator switch.
- Connect any benching with a fall back towards the machine to allow water to drain back into the wash tank.



ATTENTION

Do not make water or plumbing connections that will prevent the machine from being removed from its installed position for servicing purposes.

5.3 Commissioning and Initial Start-Up Procedure

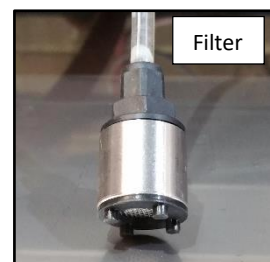
Once the appliance has been installed always ensure its functions are operating as per the following check list. Refer to Operation in section 6 for further details on how to operate each control.

1. With the rotary and isolator switches turned OFF, turn on the hot water supply to the appliance and allow the break tank to completely fill. When full, the water level should be approximately 20mm below the overflow slot at the rear of the tank. The water level can be inspected by lifting the lid from the break tank.

 **WARNING**

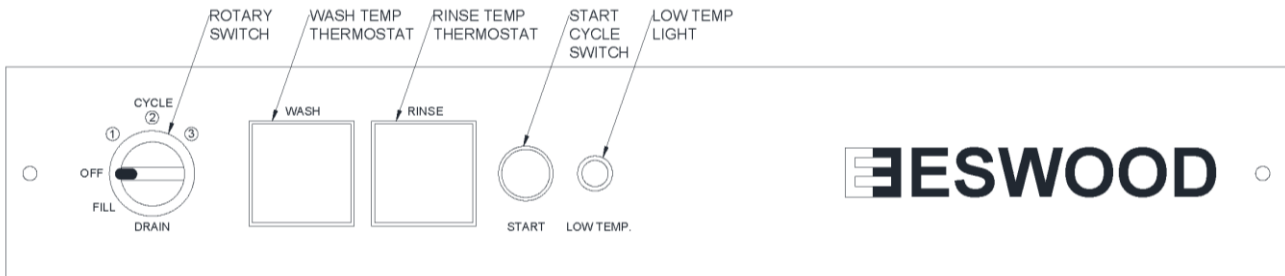
It is vital that the heating elements are safely covered with water. The elements are not covered under warranty if the rinse tank has been improperly filled and causes damage.

2. Turn the power on at the isolator with the rotary switch remaining OFF.
3. Ensure the drain overflow tube and strainers are in position.
4. Place the filter ends of the 10mm clear detergent tube into a bottle of suitable machine dishwashing detergent and rinse aid. The injectors must not run without detergent and will prime itself after the initial cycles. Use only non-caustic, commercial dishwashing and rinse aid product or contact Goldstein Eswood to order the recommended products.
5. Detergent and rinse aid dosage can be adjusted by rotating the white screw on the pump. Turn the screw clockwise to increase the dosage and anti-clockwise to decrease.
6. With the hood open, turn the rotary switch to FILL and close the hood. The machine will begin filling the wash tank and the start light will flash until the cycle is complete. Lift the hood and check that the water is up to the overflow level. Repeat the FILL cycle if the water has not reached the overflow level.
7. With the hood open, use the rotary switch to select a cycle. Cycle 1 is a short cycle. Cycles 2 & 3 are long cycles.
8. Close the hood to start the wash cycle. The start light flashes until the cycle is complete. Check for leaks after the wash cycle is complete.
9. At the end of the cycle, turn the rotary switch to the OFF position, open the door, remove the strainers and remove the overflow tube to drain the tank. Close the hood, select DRAIN on the rotary switch then hold the START button for 3 seconds until the start light flashes. This activates the drain pump and empties the wash tank. Place the overflow tube and strainers back into position once the tank is empty.
10. Refit the lower front panel and open the door to air out the machine.

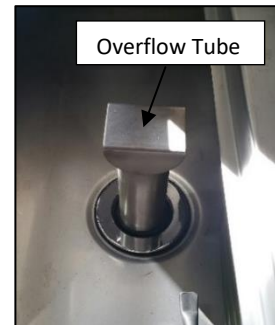


6. Operation

6.1 Washing Operation



1. Check that the overflow tube and strainers are clean and in position.
2. Check the level of detergent and fill or replace if necessary.
3. Lift the hood, turn the switch to FILL and then close the hood. The start light will flash while the machine is filling. For best results, allow the machine to heat up until the rinse temperature has reached at least 65°C then close the hood to start the fill cycle.
4. When the machine has finished filling, lift the hood and check that the water is up to the overflow level. Repeat step 2 if the overflow level has not been reached.
5. **ES-25** and **ES-32** models have 2 variable cycles. Select cycle 1 for a short cycle and 2 or 3 on the rotary switch for a long cycle. Depending on the degree of soiling on the glass or dishware, use a short cycle for light soiling and a long cycle for heavy soiling.
6. Scrape or spray off any loose food matter and place the dirty items in an appropriate rack. Slide the rack into the machine, close the hood. The start light flashes during the cycle.
Note: A cycle will not begin until the water in the rinse has reached 82°C to ensure sanitation and the warning light LOW TEMP will illuminate if the temperature is low.
When loading racks, face the flat plates in the direction of feed into the machine. Load the small items at the front and the large items at the back.
7. When the washing is finished, lift the hood and remove the clean rack. To wash another rack, repeat step 5 or 6.



The hood should not be opened until the wash, rinse and drain cycles are complete.

Prematurely opening the hood will reset the cycle time and the cycle will continue longer than necessary.

Key

Start light flashing:

Start light on:

Start light off:

Low temp light on:

Low temp light off:

Indication

a cycle is running.

a cycle is ready for operation.

no power or hood is open.

rinse temperature is low and heating to 78°C.

a cycle is ready for operation.

ATTENTION

This appliance is intended for professional use and is only to be used by trained, qualified personnel. Installation and repairs should be performed by an authorized Goldstone service agent or qualified personnel. Repairs by unqualified personnel will void warranty.

7. Cleaning and Maintenance

7.1 Shutdown & Maintenance

1. Turn the rotary switch to OFF. Remove and clean the strainer trays and overflow tube to drain the tank.
2. Close the hood, turn the rotary switch to DRAIN and hold the START button for 3 seconds to activate the drain cycle.
3. To flush out small scraps from inside the machine, close the hood and turn the rotary switch to FILL. At the end of the cycle turn the switch to OFF and lift the hood.
4. Clean the strainers under a tap, then replace the overflow tube and strainers.
5. Check the rinse and wash arm jets are free of foreign matter. If necessary, remove the arms and jets to clean them. The rinse arms can be removed by unscrewing the centre screw. Remove the end caps and pick the jets with a paper clip or similar picking tool then flush the jets under a tap. Refit the caps.

Place a small screwdriver through the hole of the rinse bearing shaft, unscrew and remove the wash arm. Pick the jets as above and flush under a tap.

Reassemble the rinse and wash arms in reverse order. Do not overtighten the shaft or screw.

6. Clean the exterior of the machine with a damp sponge. Do not pass water over the electrical controls and avoid using abrasive or strong detergents.
7. Check for leaks and ensure that the arms rotate freely.
8. Leave the hood open to allow the machine to air.



CAUTION

Never use wash hoses or water jets on this appliance. The appliance is not waterproof and caution is advised when hosing down floors near this appliance. Appliance electrical connections are commonly connected near the bottom of the appliance and water in this area can create hazardous conditions.

7.2 Periodic Maintenance

Incorporating a regular maintenance schedule will optimise and keep services running efficiently. Goldstein can provide an MIS (Machine Inspection Service) that delivers regular inspection and maintenance to reduce problems before they occur. For more information or to setup an MIS, please contact the nearest Goldstein branch.

8. Trouble-Shooting

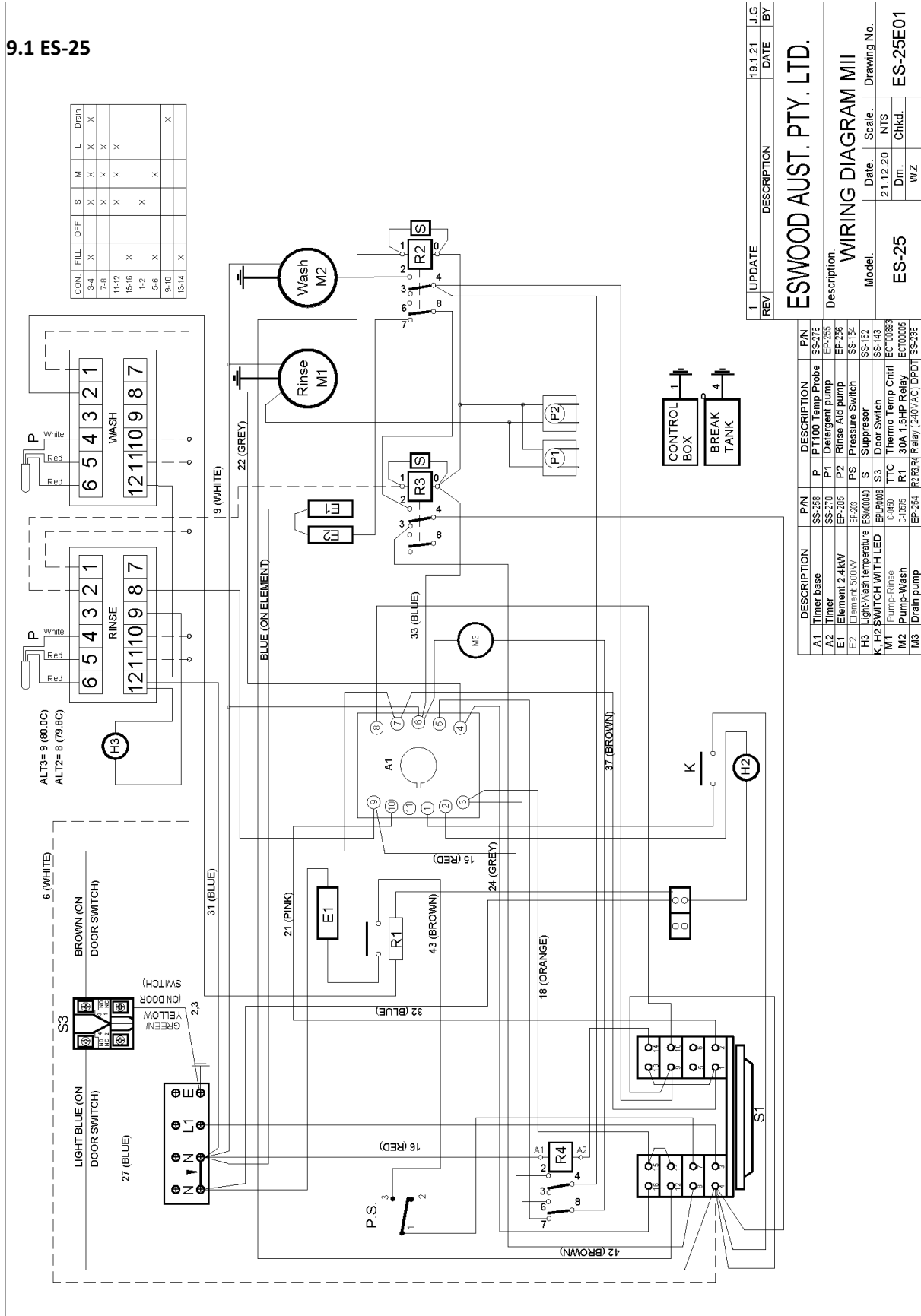
Please refer to the following guide as reference to diagnose and repair some of the more common problems encountered. Should a problem not listed arise or in doubt, please contact Goldstein Eswood or an authorised service agent.

Fault	Cause	Solution
-Thermostats and lights not coming on.	-No Power.	-Check the isolating switch is turned on and fuses are okay.
-Machine will not start.	-Low rinse temp. -Door open. -Door switch not triggered or faulty.	-Check the rinse temperature has reached at least 78°C. -Check the door is closed properly. -Check the door switch is being triggered and replace if faulty.
Machine not filling correctly and/ or filling continuously.	-Restricted or no water flow. -Wash tank water leaking into drain. -Blocked or damaged float valve.	-Check the water isolating valve is fully open and check for obstructions in the water supply line. -Check if overflow pipe is seated correctly in the wash tank and check for foreign matter under the O-ring of the pipe. -Check for obstruction in the water supply valve and clean if necessary. Check the float and replace if punctured.
Poor wash.	-Low or no detergent. -Blocked wash arms. -Incorrect placement. -Low wash temp, faulty elements. -Faulty wash pump.	-Check the detergent feeder to machine is operating correctly and no air is in the tube. -Check for foreign matter in wash arm jets and clean. -Check the items to be washed are correctly placed in racks. -Ensure rinse temperature is at least 65°C when filling wash tank. Check thermostat set value and heating element operation. -Check the wash pump is functioning.
Poor rinse.	-Low water inlet pressure. -Blocked or restricted wash arms. -Blocked or damaged inlet valve.	-Check water pressure to machine is not less than 200kPa and ensure the isolating valve is fully open. -Check rinse jets for foreign matter and clean. -Check water supply inlet valve is functioning correctly and without restriction.
Insufficient rinse temperature	-Low water inlet temp. -Incorrect or faulty thermostat. -Elements damaged.	-Check the temperature of inlet water supply is at least 65°C. -Check rinse tank thermostat is set correctly and functioning. -Check rinse tank elements are operating correctly.
SERR on thermostats	-Sensor probe error	-Check the thermostats are set for the correct probe type. -Check the temperature sensor probes for damage and replace if necessary.

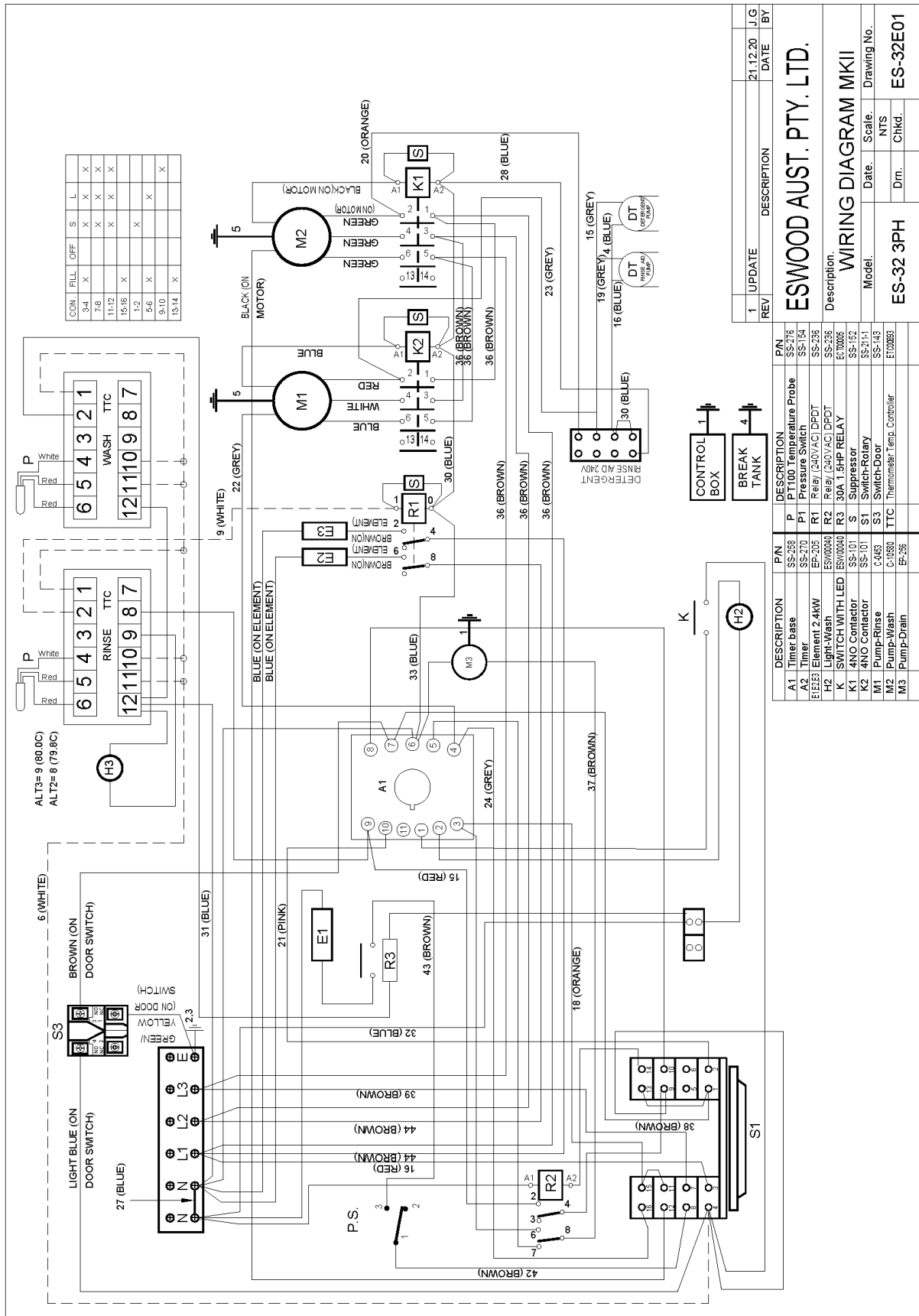
Wiring Diagram

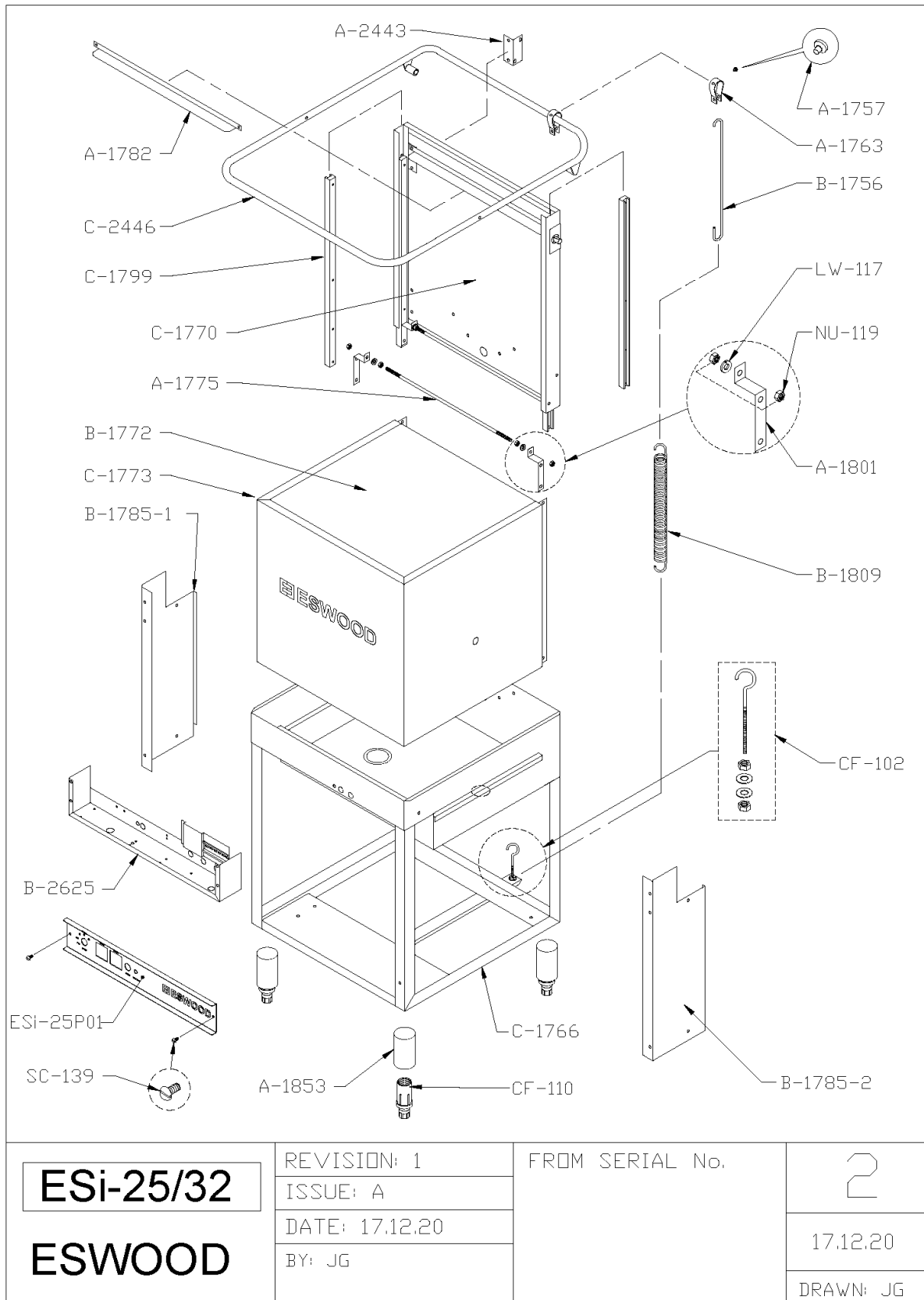
9. Wiring Diagrams

9.1 ES-25



9.2 ES-32





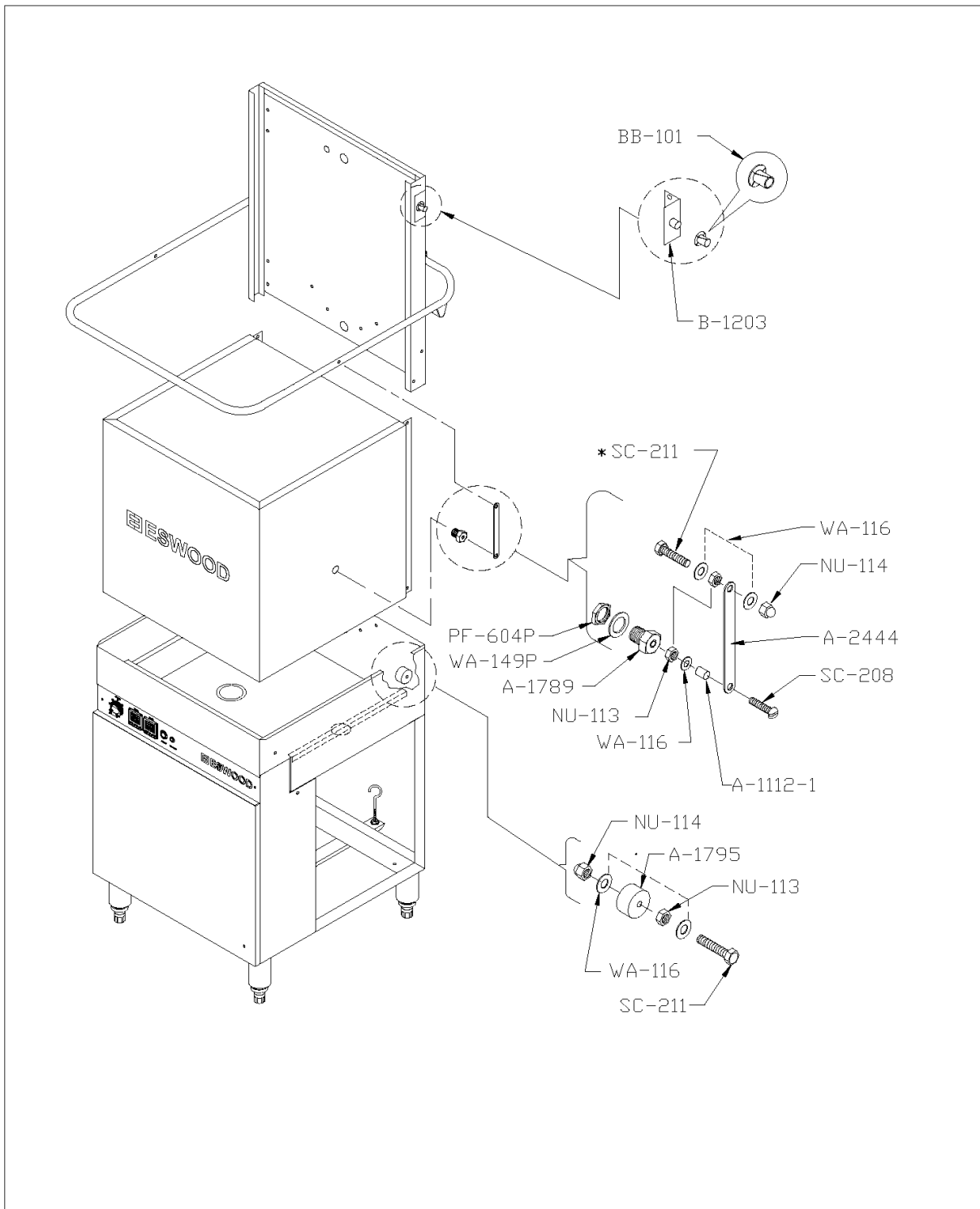
ESi-25/32
ESWOOD

REVISION: 1
ISSUE: A
DATE: 17.12.20
BY: JG

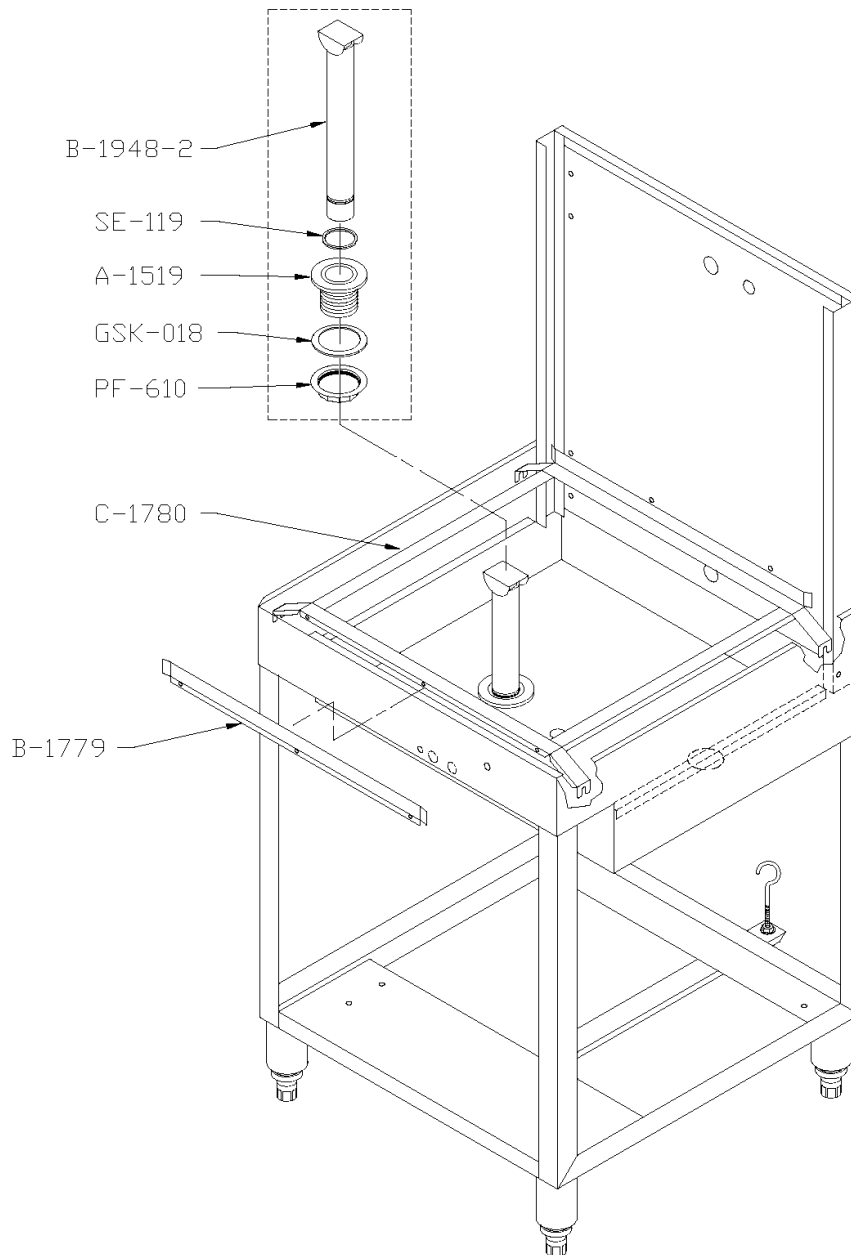
FROM SERIAL No.

2
17.12.20
DRAWN: JG

Spare Parts



ESi-25/32 ESWOOD	REVISION: 1	FROM SERIAL No.	<div style="font-size: 2em; text-align: center;">3</div>
	ISSUE: A		
	DATE: 17.12.20		
	BY: JG		
			17.12.20
			DRAWN: JG



ESi-25/32

ESWOOD

REVISION: 1

ISSUE: A

DATE: 17.12.20

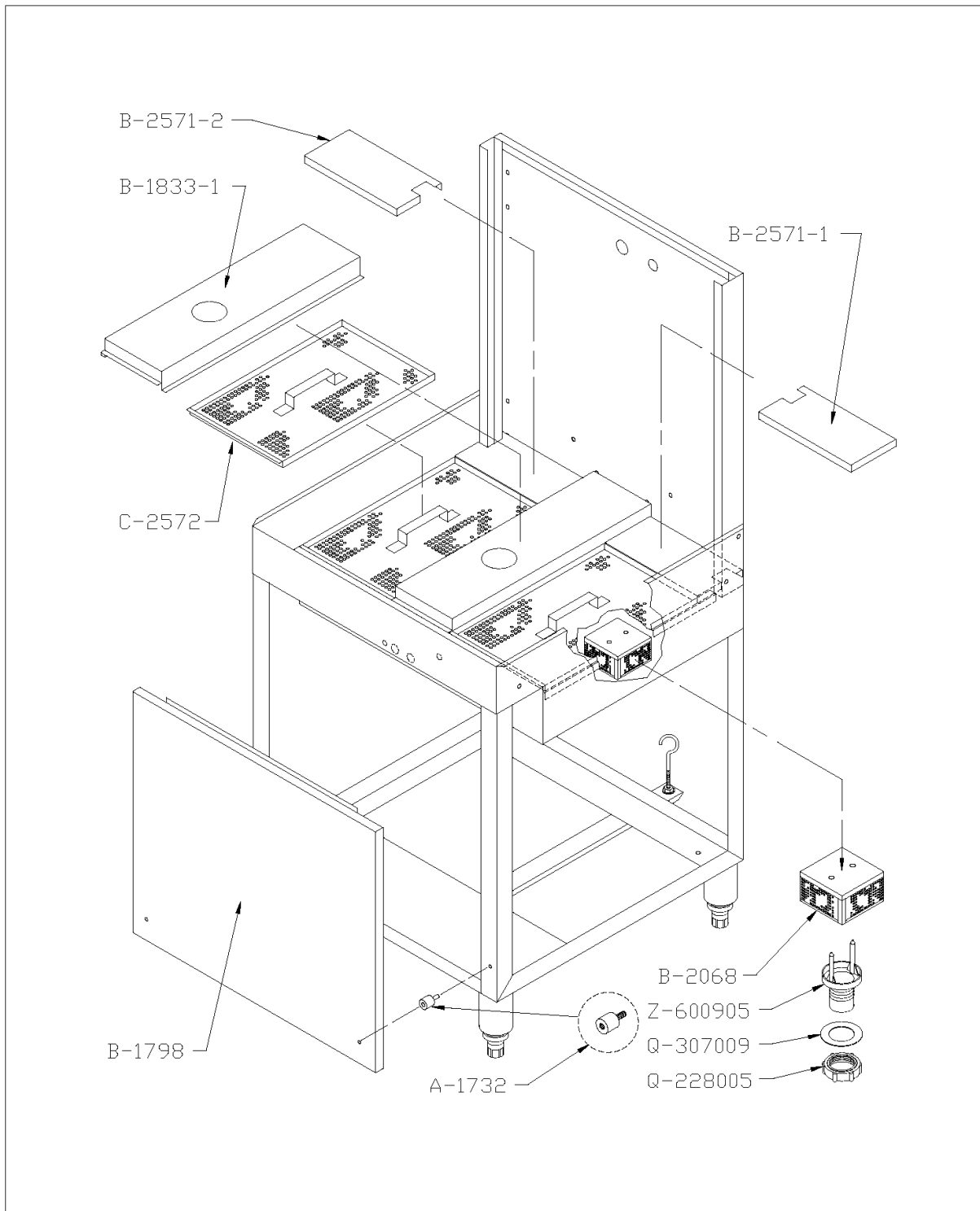
BY: JG

FROM SERIAL No.

4

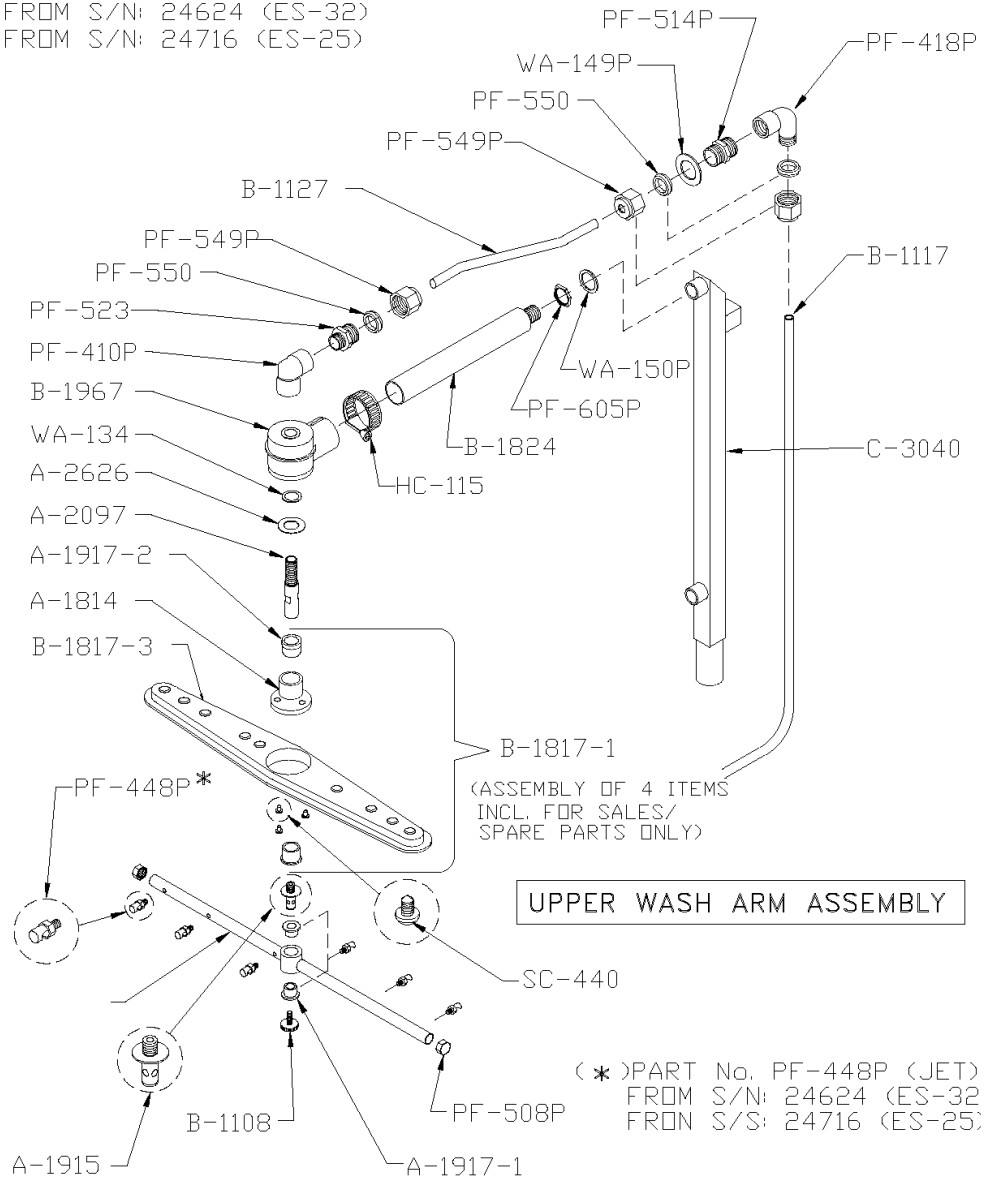
17.12.20

DRAWN: JG



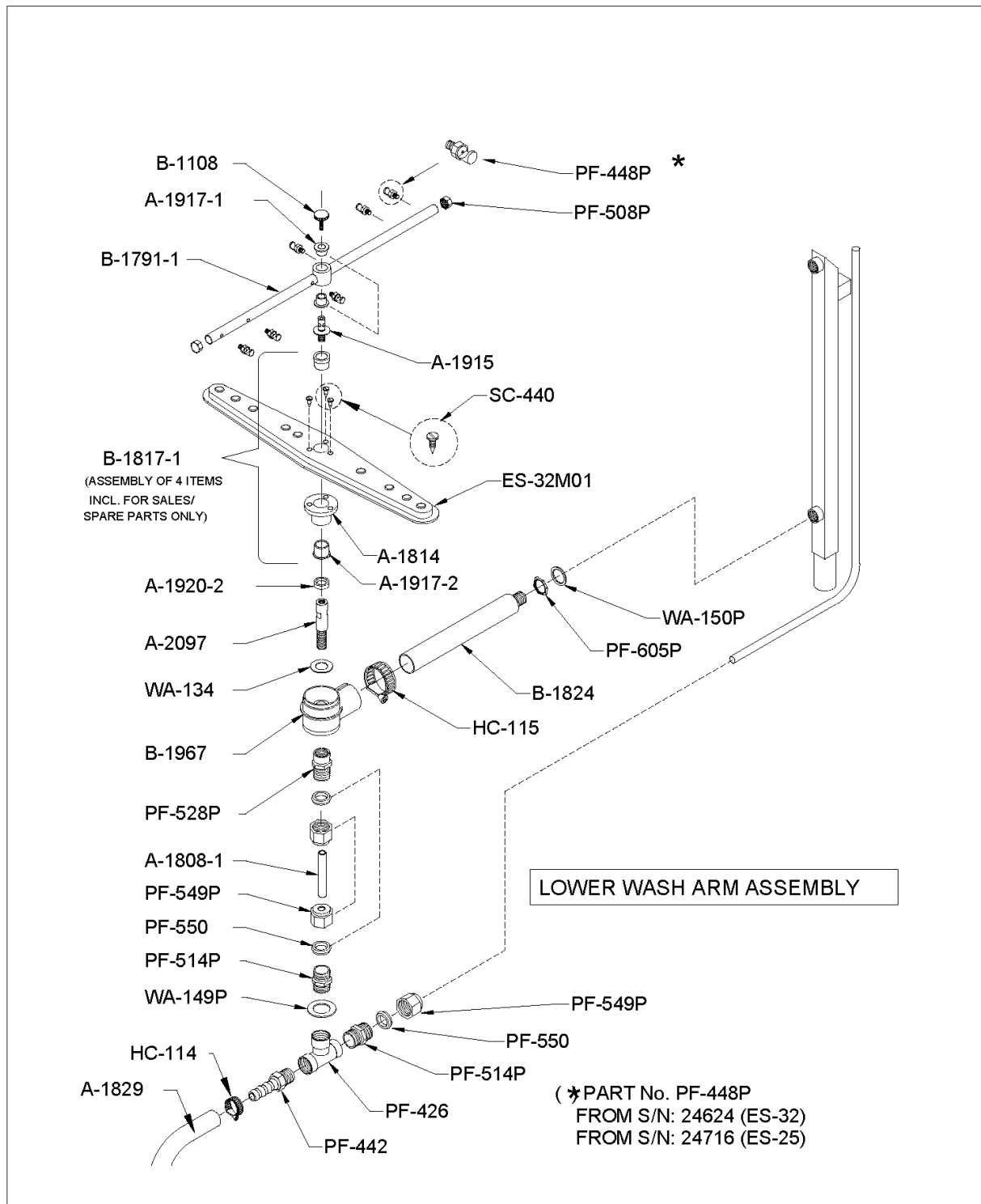
<div style="border: 1px solid black; padding: 5px; display: inline-block;"> ESi-25/32 </div> ESWOOD	REVISION: 1	FROM SERIAL No.	5
	ISSUE: A		
	DATE: 17.12.20		17.12.20
	BY: JG		DRAWN: JG

(*) PART No. PF-448P
 FROM S/N: 24624 (ES-32)
 FROM S/N: 24716 (ES-25)

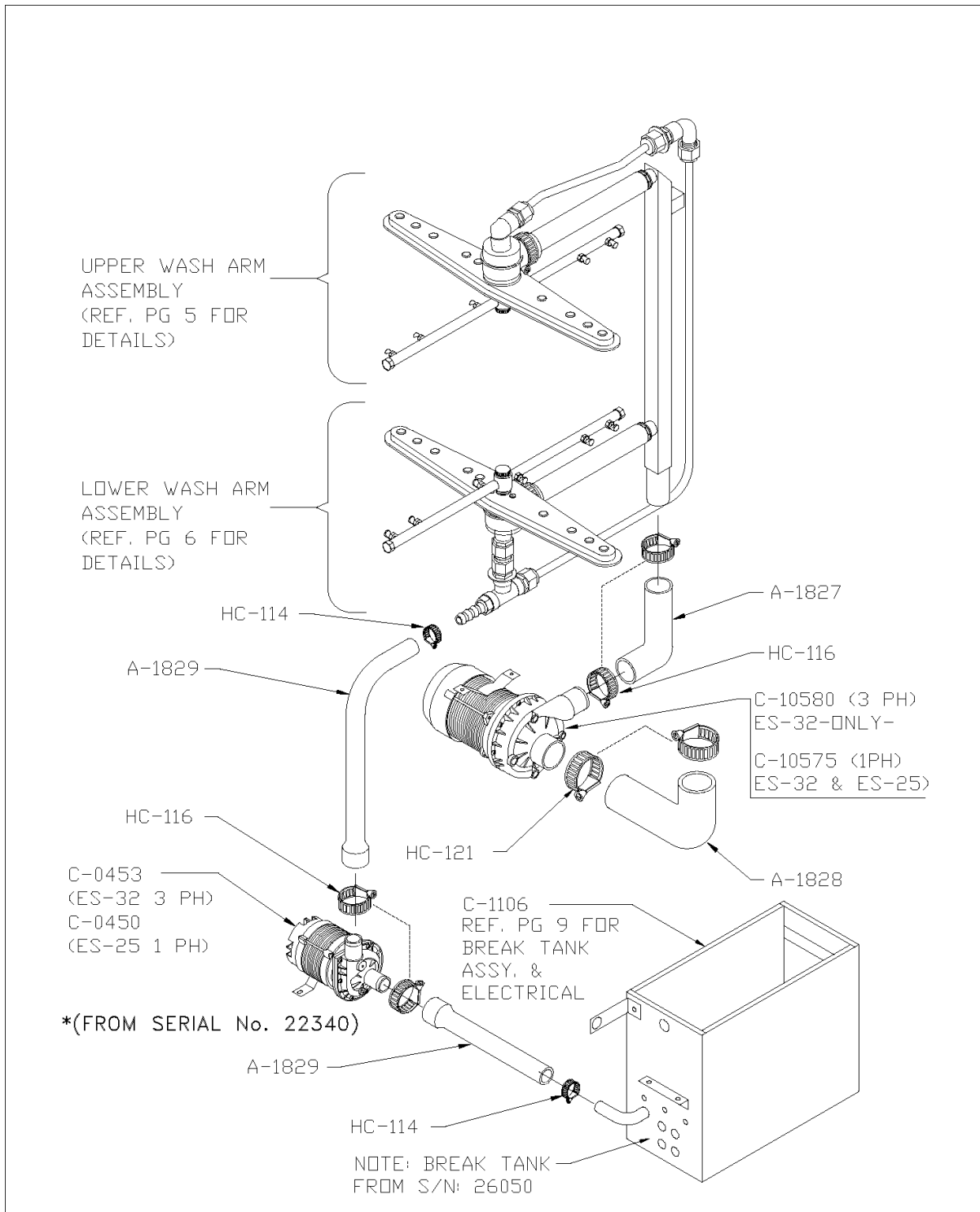


<p>ESi-25/32</p> <p>ESWOOD</p>	REVISION: 1	FROM SERIAL No.	<p style="font-size: 2em; text-align: center;">6</p>
	ISSUE: A		
	DATE: 17.12.20		
	BY: JG		
		17.12.20	
		DRAWN: JG	

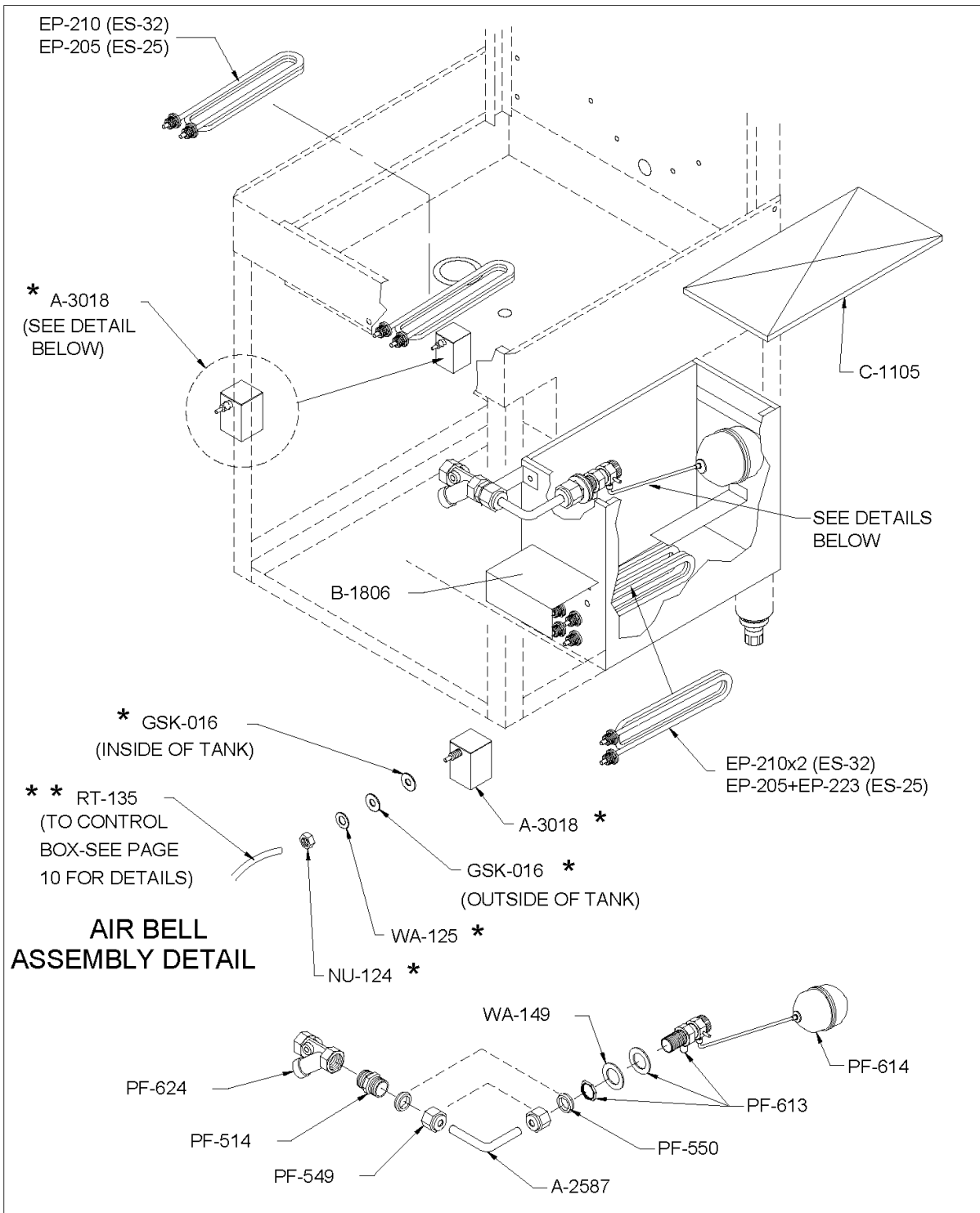
Spare Parts



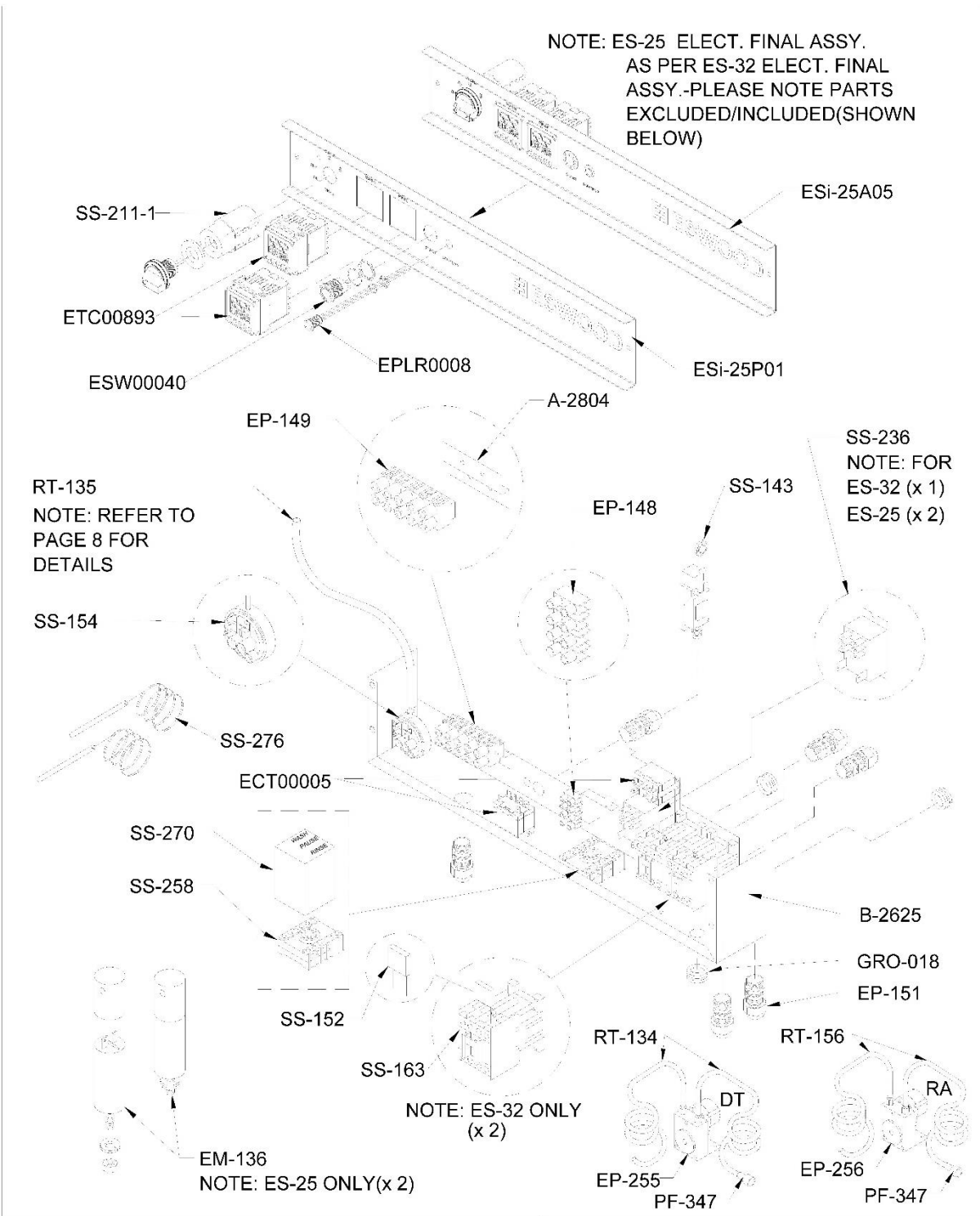
<div style="border: 1px solid black; padding: 5px; display: inline-block;"> ESi-25/32 </div> ESWOOD	REVISION: 1	FROM SERIAL No.	7
	ISSUE: A		
	DATE: 17.12.20	DRAWN: JG	
	BY: JG		



ESi-25/32 ESWOOD	REVISION: 1	FROM SERIAL No.	8
	ISSUE: A		
	DATE: 17.12.20		17.12.20
	BY: JG		DRAWN: JG



<p>ESi-25/32</p> <p>ESWOOD</p>	REVISION: 1	<p>FROM SERIAL No.</p> <p>9</p>
	ISSUE: A	
	DATE: 17.12.20	
	BY: J.G	
		17.12.20
		DRN: J.G

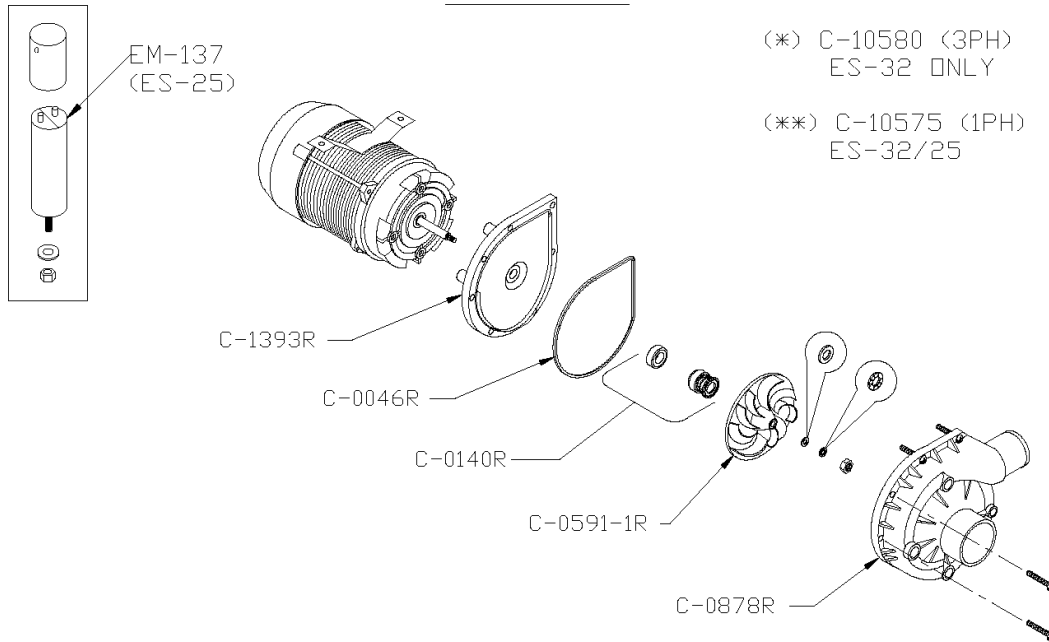


ESi-25/32
ESWOOD

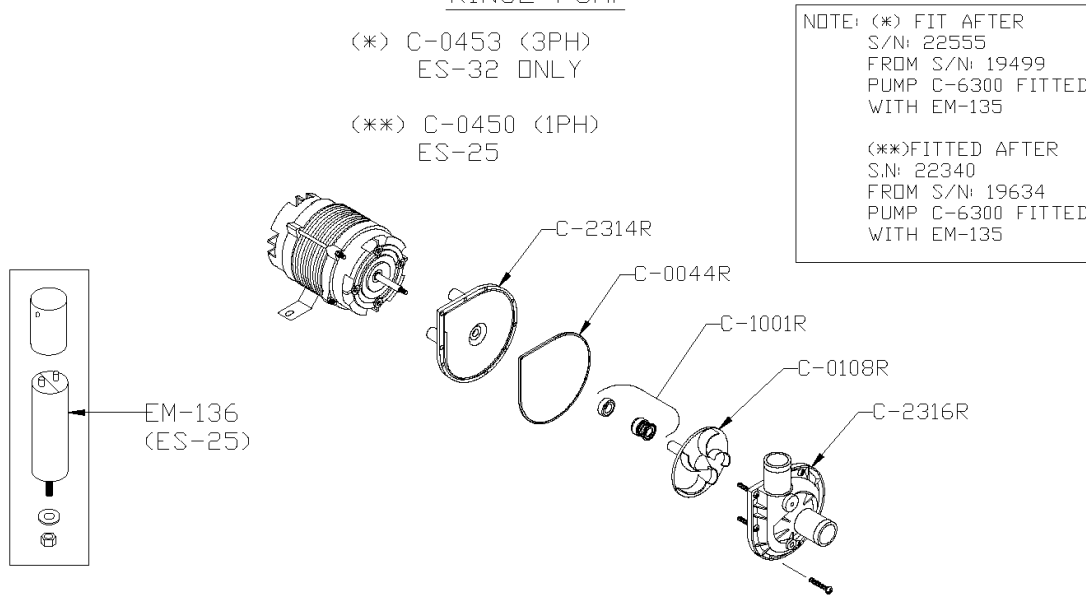
REVISION: 1
ISSUE: A
DATE: 18.12.20
BY: J.G

FROM SERIAL No. **10**
18.12.20
DRN: J.G

WASH PUMP



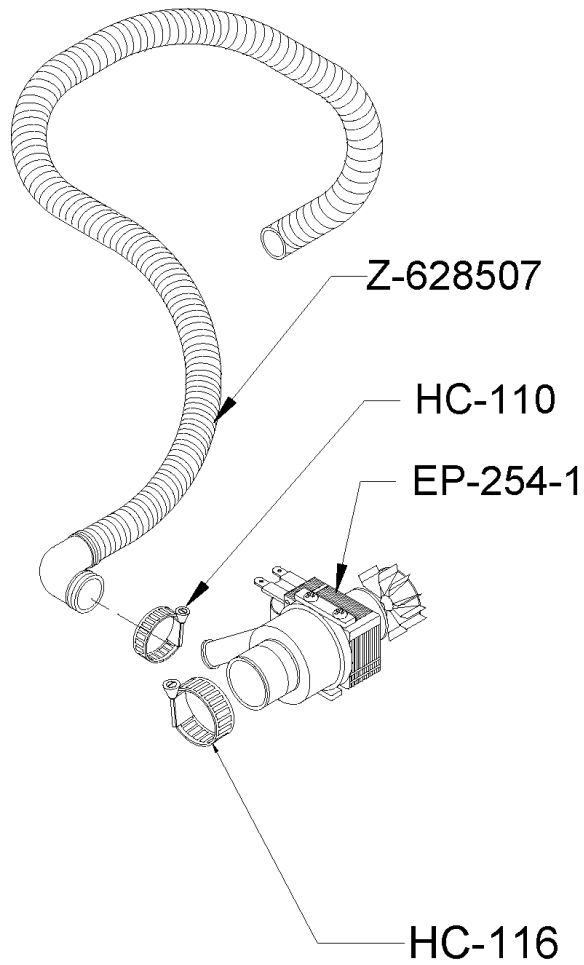
RINSE PUMP



MOTOR & RINSE PUMP ASSEMBLY

<p>ESi-25/32</p> <p>ESWOOD</p>	REVISION: 1	FROM SERIAL No.	11
	ISSUE: A		
	DATE: 18.12.20		18.12.20
	BY: J.G		DRN: J.G

DRAIN PUMP SYSTEM



<div style="border: 1px solid black; padding: 2px; display: inline-block;">ESi-25/32</div> ESWOOD	REVISION: 1	FROM SERIAL No.	12
	ISSUE: A		10/04/00
	DATE: 15.2.21		DRN: L.ROA
	BY: J.G		

Spare Parts

10.2 Parts List

PART No.	DESCRIPTION	PART No.	DESCRIPTION
A-1112-1	DOOR LINK SPACER	C-0108R	IMPELLAR
A-1519	DRAIN ASSEMBLY	C-2316R	PUMP VOLUTE
A-1757	WASH BUTTON HANDLE	CF-102	EYE BOLT + NUTS & WASHERS
A-1763	SLING-DOOR LIFT	CF-110	PLASTIC FOOT
A-1789	PIVOT HUB, HOOD LIFT	EPLR0008	12MM ROUND GREEN LED LIGHT
A-1795	HOOD STOP	ESW00040	22MM LED MOMENTARY SWITCH
A-1801	TIE ROD BRACKET	ECT00005	30A 1.5HP SP HD RELAY
A-1814	BEARING FLANGE, WASH	ECT00893	TEMP CONTROLLER
A-1829	RINSE HOSE	EP-143	CABLE GLAND
A-1915	BEARING PIN, RINSE ARM	EP-149	STRIP CONNECTOR
A-1917-1	RINSE AM BUSH	EP-151	CABLE GLAND 16mm
A-1917-2	WASH ARM BUSH	EP-205	ELEMENT (2.4KW)
A-1920-2	SPACER SLEEVE	EP-223	ELEMENT (0.5KW)
A-2097	BEARING PIN, WASH ARM	EP-210	ELEMENT (3.0KW)
A-2442-2	DOOR LINK	EP-254-1	DRAIN PUMP
A-2443	BRACKET DOOR SWITCH	EP-255	DETERGENT PUMP
A-3018	AIR BELL	EP-256	RINSE AID PUMP
B-1108	THRUST SCREW	GSK-016	GASKET
B-1203	PIVOT ASSEMBLY-DOOR HANDLE	GSK-018	GASKET 2"
B-1572	ESCUTCHEON	HC-110	HOSE CLAMP 26-38
B-1779	GUIDE BAR-RACK TRACK	HC-114	HOSE CLAMP 22-32
B-1791	RINSE ARM	HC-115	HOSE CLAMP 32-44
B-1809	DOOR SPRING	HC-116	HOSE CLAMP 35-48
B-1922	TIE ROD	HC-121	HOSE CLAMP 44-56
B-1930	TUBE UPPER RINSE	HC-124	HOSE CLAMP 52-70
B-1935	BAFFLE ASSEMBLY-STRAINER	NU-124	3/8" HEX NUT S/STEEL
B-1817-1	WASH ARM UPPER / LOWER	PF-347	FILTER VALVE
B-1944	HOOK ROD SPRING	PF-410P	3/8" F/F ELBOW-CHROME
B-1961-1	OVERFLOW TUBE	PF-411	1/2" ELBOW
B-1967	WASH ARM SUPPORT	PF-426	1/2" TEE
B-2026-1	PANEL RH	PF-442	3/4" X 1/2" TAIL PIECE
B-2027	WASH TUBE ASSEMBLY	PF-448P	RINSE ANGLE JET-CHROME
B-2663	HOSE	PF-514P	1/2" HEX NIPPLE-CHROME
BB-101	NYLON BUSH	PF-523P	3/8" X 1/2" HEX NIPPLE CHROME
C-0453	RINSE PUMP	PF-528P	1/2" X 3/8" FLANGED HEX C/P
C-1262	CONTROL PANEL	PF-549P	KINCO NUT 1/2" CHROME
C-1737	TRAINER ASSEMBLY	PF-550	OLIVE
C-1892	CONTROL BOX	PF-606P	1" BACKNUT CHROME
C-1905	CHAMBER ASSEMBLY	PF-610	2" BACKNUT
C-1906	REAR CHAMBER ASSEMBLY	RT-134	5mm CLEAR TUBE
C-1926	TANK & FRAME ASSEMBLY	RT-156	5mm BLUE TUBE
C-1937-1	PANEL LH	SE-119	O RING
C-1939-1	RACK TRACK	SS-101B	CONTACTOR
C-1942-1	BREAK TANK SUB-ASSMBLY	SS-236	240V RELAY AC COIL
C-2039	WASH MANIFOLD	SS-143	MICROSWITCH
C-2446	DOOR HANDLE ASSEMBLY	SS-152	SUPPRESSOR
C-7290E	WASH PUMP ASSEMBLY	SS-154	50/15mm ST. CONTACT PRESSURE
C-0038R	PUMP FLANGE	SS-258	TIMER – 11 PIN-BASE
C-0049R	O-RING	SS-211-1	ROTARY SWITCH
C-0142R	MECHANICAL SEAL	SS-270	ELECTRIC TIMER
C-2500-1R	IMPELLAR	SS-276	TEMP CONTROLLER PT100 3 WIRE
C-0021R	PUMP VOLUTE	WA-125	3/8" PLAIN WASHER
C-0453	MOTOR PUMP	WA-134	WASHER
C-2314R	PUMP FLANGE	WA-149P	1/2" WASHER-CHROME
C-0044R	O-RING	Z-628507	DRAIN HOSE
C-1001R	MECHANICAL SEAL		

11. Warranty

Goldstein Eswood Commercial Cooking Pty Ltd. Warranty Terms

GOLDSTEIN ESWOOD COMMERCIAL COOKING PTY LTD. (hereafter “GECC”) warrants that all products supplied by GECC (hereafter “product/s”) are free of defects in material and workmanship for a period of 12 months from the date of purchase. Subject to the exclusions and conditions below, GECC undertakes to repair, replace, supply or refund (at GECC’s option) all products and components supplied by GECC which GECC in its sole and absolute discretion deems to be defective in materials or workmanship under proper, normal and recommended conditions of use and maintenance.

This undertaking covers the provision of labour for 12 months and parts for 12 months from the date of purchase of the product.

Defective replacement spare parts will be repaired or re-supplied for a period of 3 months from delivery of the product.

Nothing in this warranty should be interpreted to extend any warranty received by, or benefiting, GECC to the customer. The terms of this warranty, and the obligations of GECC created by this warranty are as expressly stated in this warranty only. Any verbal representation made by GECC or third parties on behalf of GECC are not binding.

Warranty Claim Procedure

To obtain the benefit of this warranty, the customer must:

1. Give notice to GECC immediately upon becoming aware of the alleged defect and in any event before the expiration of the said 12 month period;
2. Provide GECC with proof of date of purchase; and
3. Stop using the product immediately, and switch it off until further instructions are provided by GECC.

Provided the warranty claim meets the requirements outlined in this document, GECC will provide service in support of the warranty claim. Part of this service will be the collection of information to diagnose the fault prior to arriving on site. Such information is to be provided to GECC by the customer in a prompt manner.

GECC will charge the customer for repairs (including labour, parts and travel) carried out by GECC or the GECC nominated service provider that are not covered by warranty and repairs that are not required to be carried out in terms of the Australian Consumer Law (if applicable). GECC will also charge for any items as listed under “Additional Charges” below. GECC will endeavour to quote for repairs prior to making the repair, including all applicable additional charges.

Additional Charges

GECC will charge the customer for the following Additional Charges:

- Service outside the normal working hours or on public holidays;
- Service outside of GECC’s service area. This is 250km round trip from the closest GECC branch or the GECC nominated service provider;
- Additional costs of the warranty repair including but not limited to accommodation, cost of transport, site inductions and freight;
- Poor access and waiting time;
- All other costs including, without limitation, cartage, carriage and installation.

Warranty Exclusions

- The liability of GECC under this warranty is limited to the repair or replacement of defective products or components.
- This warranty does not cover normal or scheduled maintenance.
- This warranty does not cover consumable items including but not limited to globes, seals, drive belts, fuses, and water filters.
- This warranty does not cover the clearing of drains.
- This warranty does not cover the resetting of circuit breakers or overload devices.
- This warranty does not cover damage or malfunction to products resulting from poor maintenance or negligence of a party other than GECC.
- This warranty does not cover damage or malfunction to products caused intentionally or unintentionally by third parties, neglect or force majors.

Warranty

This warranty does not apply if a defect arises from any of the following:

- *Improper installation or commissioning of the products.*
- *Installation of the products not performed by a licenced installer. Proof of licence number may be required by GECC at time of placing the warranty claim.*
- *Operation, use or maintenance of the product otherwise than in accordance with the instructions provided by GECC or any of the associated relevant Middleby Companies.*
- *Use of chemicals other than those recommended by GECC or any of the associated relevant Middleby Companies.*
- *Accidental damage, misuse, negligence or any other failure to take reasonable care.*
- *Use of the product for a purpose outside those specified by GECC or any of the associated relevant Middleby Companies.*
- *Use of the product for a purpose or in environmental conditions outside those specified by GECC or any of the associated relevant Middleby Companies.*
- *Where products have been disassembled or had unauthorised changes made by persons other than GECC or a GECC nominated service representative.*
- *Damage caused through blocked drains.*
- *Damage caused by blockages to pilots, injectors and burners.*
- *Damage arising from corrosion and/or lime scale.*
- *Damaged caused by, or the replacement of, parts or items not supplied by GECC or any of the associated relevant Middleby Companies.*
- *Damage caused by rodents or insects.*
- *Damage caused by lightning, flooding or an act of God.*

Warranty Conditions

This warranty is subject to the following conditions:

- *Labour which is reasonable and necessary pursuant to the terms of this warranty is supplied free of charge during normal working hours, namely between 8:30am and 4:30pm Monday to Friday, excluding public holidays. Should warranty work be requested outside of normal working hours, charges will apply (see Additional Charges).*
- *While the products are in the custody of GECC for investigation or repair, they shall be at the risk of the customer and no liability shall attach to GECC, its servants or agents for any damage occasioned to, or loaned, the products howsoever arising.*
- *The warranty period is not renewed or extended as a result of a warranty repair or replacement unless by agreement with GECC.*
- *This warranty is not transferable and is only offered to the original customer.*
- *The warranty registration card was submitted on commissioning.*
- *This warranty only applies to products purchased from GECC or an authorised GECC distributor.*
- *Any warranty claim must meet the requirements set out in "Warranty Procedure".*
- *Warranty work must be performed only by GECC or by a GECC authorised service provider.*
- *When a product or component is replaced or refunded, any replaced item becomes the property of GECC.*
- *GECC may amend the terms of this warranty from time to time, at its absolute discretion.*